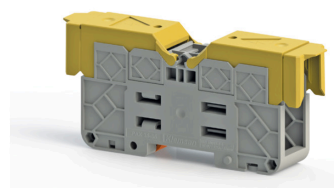


# EBT

## High Current Bolt Terminals with Integrated Protective Covers

### EBT25-35PC

Width: 27 mm



60.00  
MR 35 x 7.5

135.00

### EBT50-70PC

Width: 31.80 mm



70.00  
MR 35 x 7.5

170.00



Electrical Ratings
CE (EN 60947-7-1)
cRUus
VDE (IEC 60947-7-1)
CSA
IECEX

Connection Data
Connection in acc. with standard
Cable Lugs DIN 46234
Cable Lugs DIN 46235
Cable Lugs DIN 46234
Cable Lugs DIN 46235
Bolt
Tightening Torque, Min.
Tightening Torque, Max.

Bar Connection


Technical Data
Rated Impulse Voltage / Pollution Severity
Insulation Material Group / Gauge Pin Code Acc. to IEC 60947-1
Protection Class / Protection Conductor Type

Package Qty.
1 pc

Voltage, VAC/DC	Current, A	Cross Section
1000	125	2.5-50 mm <sup>2</sup>

DIN 46234 / DIN 46235
2.5 - 50 mm <sup>2</sup>
6 - 25 mm <sup>2</sup>
AWG 14 - 1/0
AWG 10 - 4
M 6
3 Nm
6 Nm

Part Number	Qty.
CC-EBT35/2	5
CC-EBT35/3	5

8/3
1 / NA
IP20

1 pc
------

Voltage, VAC/DC	Current, A	Cross Section
1000	192	2.5-95 mm <sup>2</sup>

DIN 46234 / DIN 46235
2.5 - 95 mm <sup>2</sup>
16 - 70 mm <sup>2</sup>
AWG 14 - 3/0
AWG 6 - 2/0
M 8
6 Nm
12 Nm

Part Number	Qty.
CC-EBT70/2	5
CC-EBT70/3	5

8/3
1 / NA
IP20

1 pc
------

## EBT95-150PC

Width: 41 mm



78.50  
MR 35 x 7.5

226.00

## EBT185-240PC

Width: 55 mm



90.30  
MR 35 x 7.5

280.00

## EBT300PC

Width: 55 mm



90.30  
MR 35 x 7.5

280.00

Voltage, VAC/DC	Current, A	Cross Section
1000	309	6-150 mm <sup>2</sup>

DIN 46234 / DIN 46235
6 - 150 mm <sup>2</sup>
16 - 150 mm <sup>2</sup>
AWG 10 - 300 kcmil
AWG 6 - 300 kcmil
M 10
10 Nm
20 Nm

Part Number	Qty.
CC-EBT150/2	5
CC-EBT150/3	5

8/3
1 / NA
IP20
1 pc

Voltage, VAC/DC	Current, A	Cross Section
1000	415	10-240 mm <sup>2</sup>

DIN 46234 / DIN 46235
10 - 240 mm <sup>2</sup>
25 - 240 mm <sup>2</sup>
AWG 8 - 500 kcmil
AWG 4 - 500 kcmil
M 12
14 Nm
30 Nm

Part Number	Qty.
CC-EBT240/2	5
CC-EBT240/3	5

8/3
1 / NA
IP20
1 pc

Voltage, VAC/DC	Current, A	Cross Section
1000	520	25-300 mm <sup>2</sup>

DIN 46234 / DIN 46235
25 - 240 mm <sup>2</sup>
50 - 300 mm <sup>2</sup>
AWG 4 - 500 kcmil
AWG 1/0 - 600 kcmil
M 16
25 Nm
35 Nm

Part Number	Qty.
CC-EBT300/2	5
CC-EBT300/3	5

8/3
1 / NA
IP20
1 pc